



# Built for any foundation challenge

Long Reach Drilling Rigs



HPM



[www.hpmitaly.com](http://www.hpmitaly.com)

HPM



# SUMMARY

<b>Company</b> _____	P.4
<b>HPM 55B</b> _____	P.6
<b>HPM 55B short mast</b> _____	P.8
<b>HPM 25B</b> _____	P.10
<b>HPM 25B short mast</b> _____	P.12



# COMPANY

## Global leaders In drilling rigs Manufacturing

The HPM product range combines **functional design, next-generation technologies, and superior manufacturing** quality to ensure reliable, long-term performance.

Our modular design approach allows us to customize our machinery and adapt it to a wide array of drilling applications, including bored piles, low clearance solutions, **cased bored piles, CFA (Continuous Flight Auger), displacement piles, soil mixing, and DTH.**

Our drill rigs  
are designed  
to get the  
**best torque/  
weight  
ratio in the  
market**



# Family values even at work

We are an Italian family-owned enterprise specializing in the engineering and manufacturing of foundation drilling equipment, with a distinguished international presence.

We are a recognized **global leader in hydraulic drilling rigs built on Caterpillar® bases**, a strategic partnership that stands as a cornerstone of our industrial identity.

Our operations **are defined by a proactive, results-driven mindset**, rooted in a culture of **collaboration, accountability, and professional excellence**.

We believe in a future for the foundation industry built on high-performance machinery designed around real-world operational needs. Our mission is to develop reliable, high quality, and customized drilling rigs, shaped by continuous dialogue with those working on-site every day. Every project is born from the **perfect balance of precision engineering, client consultation, and the ability to transform complex application requirements into effective solutions**.

## Choosing excellence

We are a global leader in the design and manufacture of hydraulic drilling rigs mounted on Caterpillar® bases.

## Customization as a working method

We configure every rig based on specific applications, operating environments, and client objectives. Every drilling unit is a unique, purpose-built tool.

## In-house design and end-to-end control

Every rig is designed, assembled, and tested by HPM.

All components are certified, with guaranteed worldwide service and support.

## Technical expertise and entrepreneurial vision

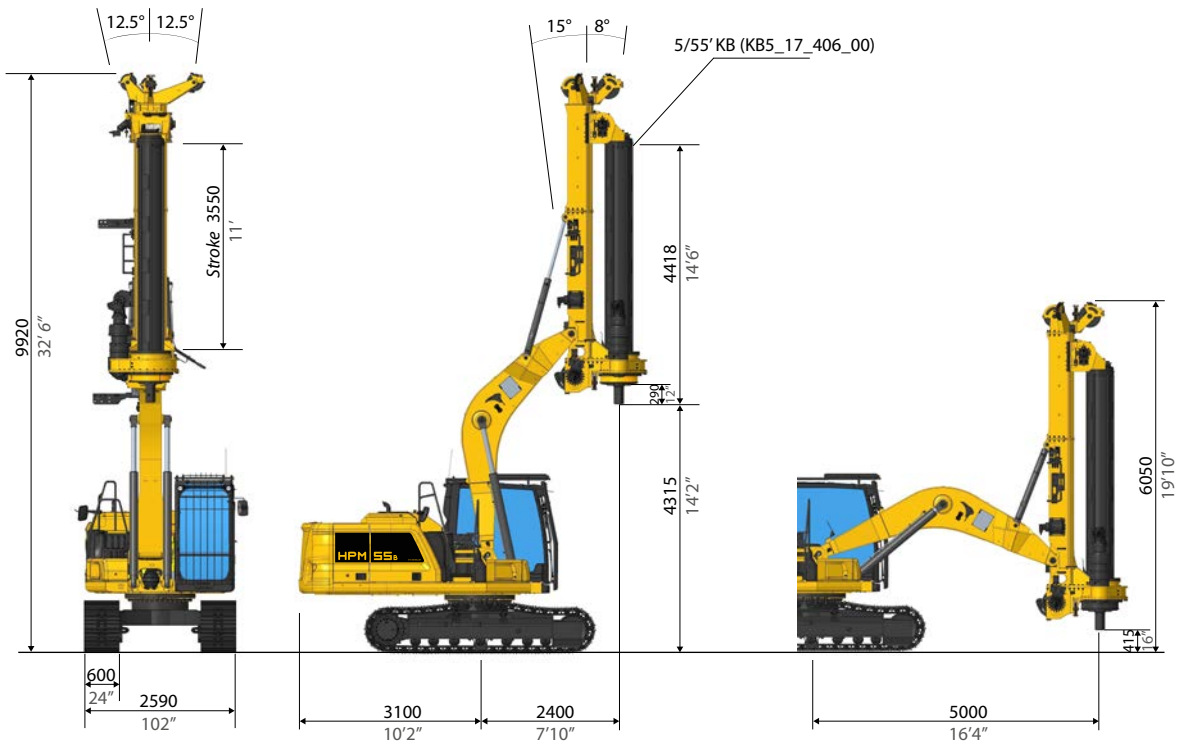
With over 45 years of experience in the drilling industry, we combine a strong entrepreneurial vision with a commitment to innovation and global growth.

# HPM 55B

**OVER OBSTACLES,  
AND BEYOND!**



**GENERAL DIMENSIONS**



**TRANSPORT DIMENSIONS**



Transport and operating weight

25500 kg - 56000 LBS

## **BASE**

Model	CAT 317 NGH	
Engine model	CAT C3.6	
Power rating ISO 14396	99 kW	133 HP
Displacement	3.6 l	220 in <sup>3</sup>
Fuel tank	271 l	71.6 gal

## **UNDERCARRIAGE**

Undercarriage type	Fixed Width	
Width	2590 mm	102"
Shoe width	600 mm	2'

## **ROTARY**

Rotary torque	85 kNm	63500 lb.ft
Max effective torque	74 kNm	54000 lb.ft
Working speed	0-30 rpm	
Working gears	10	
Discharge speed	60 rpm	

## **MAIN WINCH**

Effective pull force	106 kN	24000 lbf
Rope speed	70 m/min	230 ft/min
Rope diameter	19 mm	3/4"

## **AUXILIARY WINCH**

Max pull force	26 kN	5850 lbf
Rope speed	45 m/min	148 ft/min
Rope diameter	12 mm	15/35"

## **CROWD SYSTEM**

Crowd type	Winch Crowd Pull	
Pull force	103 kN	23150 lbf

## **DRILLING DATA**

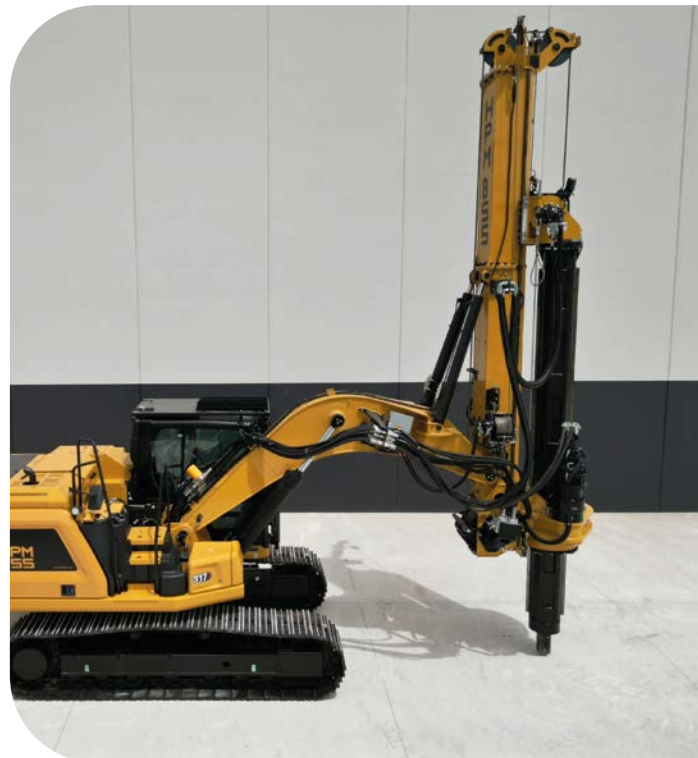
Standard kelly bar	5/53	
Drilling depth*	16.8 m	55 ft

## **MAIN STANDARD EQUIPMENT**

- ✓ Multifunctional HPM Computer
- ✓ Travel Alarm
- ✓ Cameras
- ✓ Automatic Mast Verticalization
- ✓ Auto Alignment with memory function
- ✓ Rotary Speed Control
- ✓ 10 Gears System
- ✓ Remote Diagnostics/Updates
- ✓ Removable Counterweight

## **OPTIONAL EQUIPMENT**

- Aux. Swing Brake
- Casing Oscillator Predisposition
- Universal Casing Joint
- Remote Control
- Self Erecting Counterweight
- FOPS cab
- Biodegradable Hydraulic Oil
- Central Lubrification System
- Short Mast Kit
- Dozer Blade
- Rubber pads



\*Different Kelly-Bar available on request

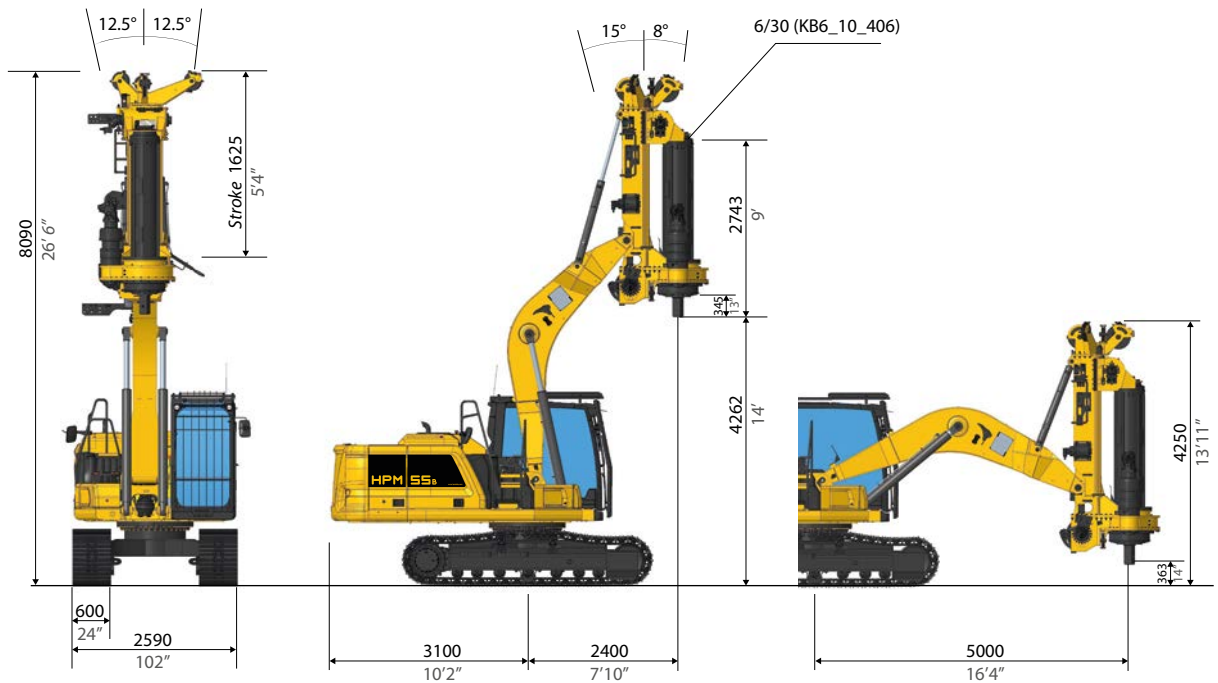
# HPM 55B

short mast

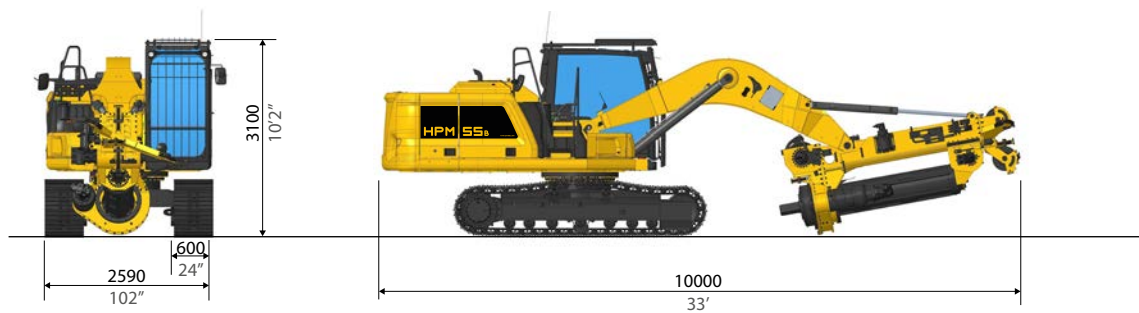
**GO FAR  
AND KEEP IT LOW**



**GENERAL DIMENSIONS**



**TRANSPORT DIMENSIONS**



Transport and operating weight

25000 kg - 55100 LBS

## **BASE**

Model	CAT 317 NGH	
Engine model	CAT C3.6	
Power rating ISO 14396	99 kW	133 HP
Displacement	3.6 l	220 in <sup>3</sup>
Fuel tank	271 l	71.6 gal

## **UNDERCARRIAGE**

Undercarriage type	Fixed Width	
Width	2590 mm	102"
Shoe width	600 mm	2'

## **ROTARY**

Rotary torque	85 kNm	63500 lb.ft
Max effective torque	74 kNm	54000 lb.ft
Working speed	0-30 rpm	
Working gears	10	
Discharge speed	60 rpm	

## **MAIN WINCH**

Max pull force	98 kN	22000 lbf
Starting pull force	106 kN	24000 lbf
Rope speed 1st layer	83 m/min	272 ft/min
Rope diam. 2nd layer:	89 m/min	290 ft/min
Rope diameter	19 mm	3/4"

## **AUXILIARY WINCH**

Max pull force	30 kN	6750 lbf
Rope speed	55 m/min	180 ft/min
Rope diameter	12 mm	15/35"

## **CROWD SYSTEM**

Crowd type	Winch Crowd Pull	
Pull force	103 kN	23150 lbf

## **DRILLING DATA**

Standard kelly bar	6/30'	
Drilling depth*	10 m	32 ft

## **MAIN STANDARD EQUIPMENT**

- ✓ Multifunctional HPM Computer
- ✓ Travel Alarm
- ✓ Cameras
- ✓ Automatic Mast Verticalization
- ✓ Auto Alignment with memory function
- ✓ Rotary Speed Control
- ✓ 10 Gears System
- ✓ Remote Diagnostics/Updates
- ✓ Removable Counterweight

## **OPTIONAL EQUIPMENT**

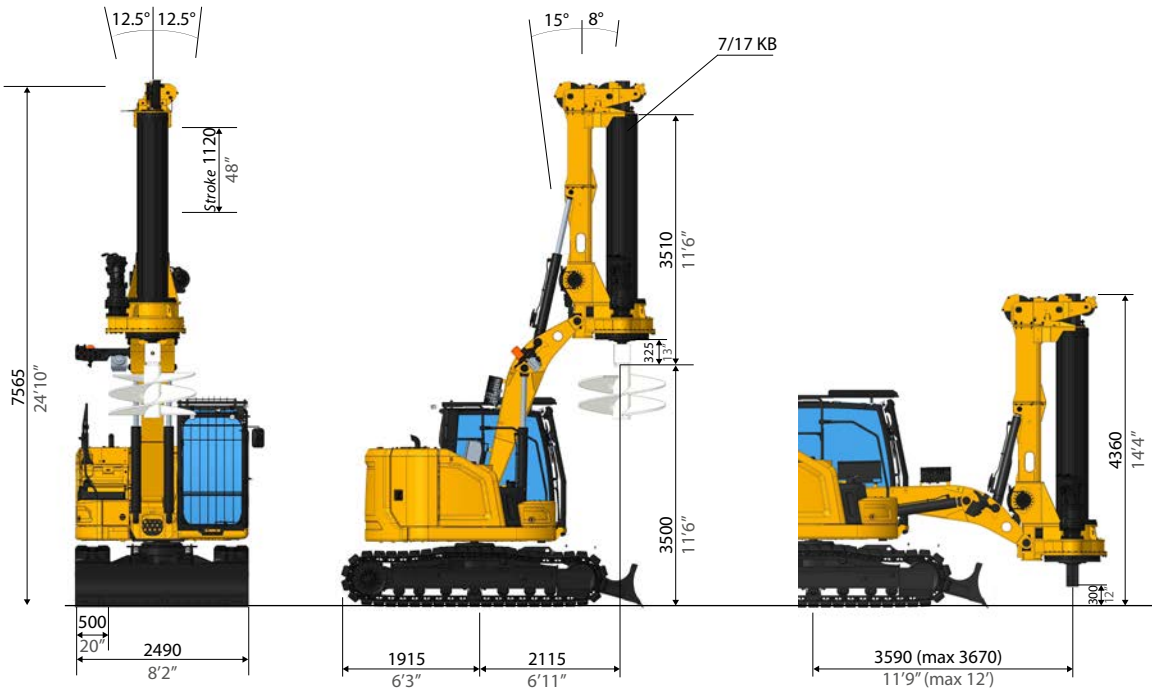
- Aux. Swing Brake
- Casing Oscillator Predisposition
- Universal Casing Joint
- Remote Control
- Self Erecting Counterweight
- FOPS cab
- Biodegradable Hydraulic Oil
- Central Lubrification System
- Long Mast Kit
- Dozer Blade
- Rubber pads



\*Different Kelly-Bar available on request



**GENERAL DIMENSIONS**



**TRANSPORT DIMENSIONS**



Transport and operating weight

20000 kg - 44000 LBS

## **BASE**

Model	CAT 315	
Engine model	CAT C3.6	
Power rating ISO 14396	81 kW	110 HP
Displacement	3.6 l	220 in <sup>3</sup>
Fuel tank	187 l	49 gal

## **UNDERCARRIAGE**

Undercarriage type	Fixed Width	
Width	2490 mm	98"
Shoe width	500 mm	20"

## **ROTARY**

Max effective torque	35 kNm	25900 lb.ft
Working speed	16-90 rpm	
Working gears	10	

## **MAIN WINCH**

Effective pull force	72 kN	16200 lbf
Rope diameter	19 mm	3/4"
Rope speed	80 m/min	260 ft/min

## **AUXILIARY WINCH**

Effective pull force	26 kN	5800 lbf
Rope diameter	10 mm	3/8"
Rope speed	52 m/min	170 ft/min

## **CROWD SYSTEM**

Crowd type	Cylinders Crowd Pull	
Pull force	110 kN	25000 lbf

## **DRILLING DATA**

Standard kelly bar	7/17	
Drilling depth*	16.8 m	55'

## **MAIN STANDARD EQUIPMENT**

- ✓ Multifunctional HPM Computer
- ✓ Travel Alarm
- ✓ Cameras
- ✓ Automatic Mast Verticalization
- ✓ Auto Alignment with memory function
- ✓ Rotary Speed Control
- ✓ 10 Gears System
- ✓ Remote Diagnostics/Updates
- ✓ Removable Counterweight
- ✓ Dozer Blade
- ✓ Rubber tracks

## **OPTIONAL EQUIPMENT**

- Aux. Swing Brake
- Casing Oscillator Predisposition
- Universal Casing Joint
- Remote Control
- Self Erecting Counterweight
- FOPS cab
- Biodegradable Hydraulic Oil
- Central Lubrification System
- Short Mast Kit



\*Different Kelly-Bar available on request

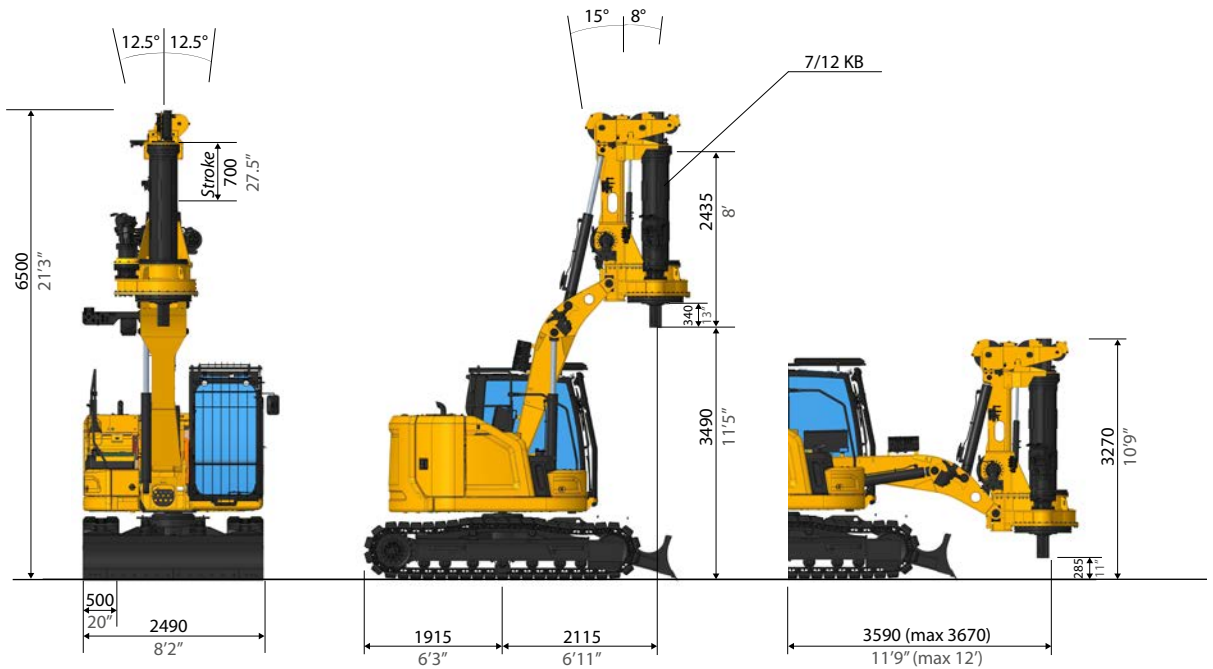
# HPM 25B

short mast

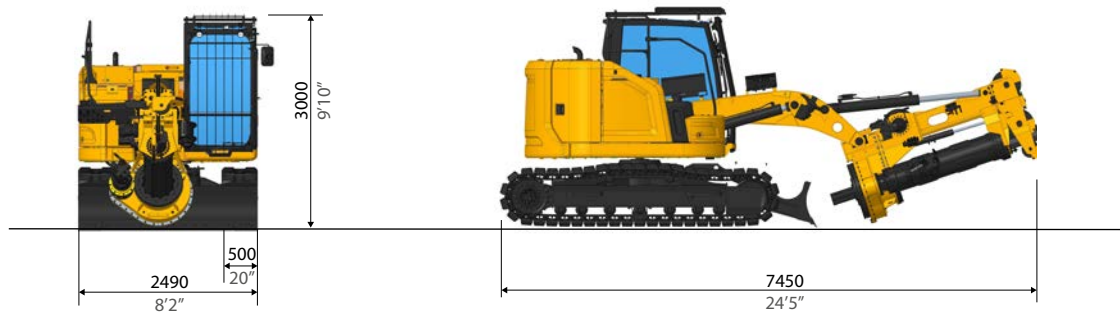
**FITS THE POCKET,  
RULES THE JOBSITE**



**GENERAL DIMENSIONS**



**TRANSPORT DIMENSIONS**



Transport and operating weight

19000 kg - 41900 LBS

## **BASE**

Model	CAT 315	
Engine model	CAT C3.6	
Power rating ISO 14396	81 kW	110 HP
Displacement	3.6 l	220 in <sup>3</sup>
Fuel tank	187 l	49 gal

## **UNDERCARRIAGE**

Undercarriage type	Fixed Width	
Width	2490 mm	98"
Shoe width	500 mm	20"

## **ROTARY**

Max effective torque	35 kNm	25900 lb.ft
Working speed	16-90 rpm	
Working gears	10	

## **MAIN WINCH**

Effective pull force	72 kN	16200 lbf
Rope diameter	19 mm	3/4"
Rope speed	80 m/mm	260 ft/min

## **AUXILIARY WINCH**

Effective pull force	26 kN	5800 lbf
Rope diameter	10 mm	3/8"
Rope speed	52 m/mm	170 ft/min

## **CROWD SYSTEM**

Crowd type	Cylinders Crowd Pull	
Pull force	110 kN	25000 lbf

## **DRILLING DATA**

Standard kelly bar	7/10	
Drilling depth*	9.9 m	32'6"
Drilling depth with 9/13	13 m	42'8"

## **MAIN STANDARD EQUIPMENT**

- ✓ Multifunctional HPM Computer
- ✓ Travel Alarm
- ✓ Cameras
- ✓ Automatic Mast Verticalization
- ✓ Auto Alignment with memory function
- ✓ Rotary Speed Control
- ✓ 10 Gears System
- ✓ Remote Diagnostics/Updates
- ✓ Removable Counterweight
- ✓ Dozer Blade
- ✓ Rubber tracks

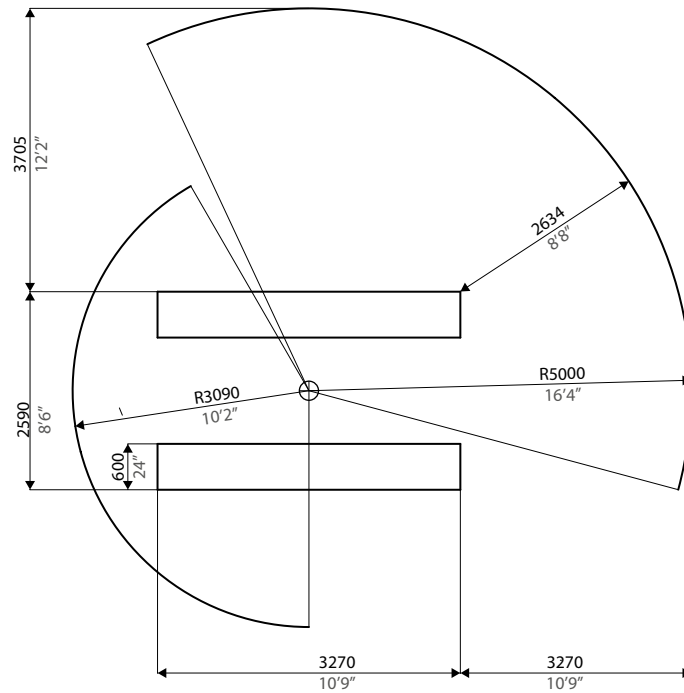
## **OPTIONAL EQUIPMENT**

- Aux. Swing Brake
- Casing Oscillator Predisposition
- Universal Casing Joint
- Remote Control
- Self Erecting Counterweight
- FOPS cab
- Biodegradable Hydraulic Oil
- Central Lubrification System
- Long Mast Kit

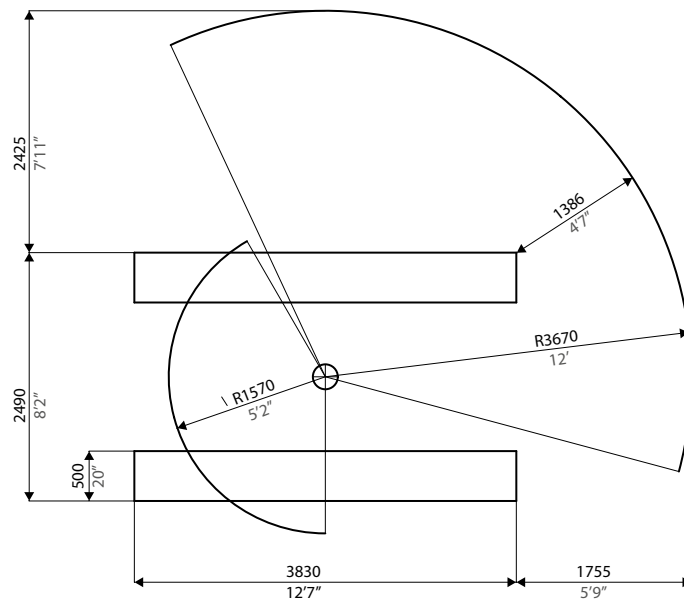


\*Different Kelly-Bar available on request

## WORKING RADIUS 55B



## WORKING RADIUS 25B



Design developments and process improvements may require the specifications and materials to be updated and changed without prior notice or liability.

These and the technical data are provided as indicative information only, with any errors and misprints reserved.



---

HPM- Hydraulic Performance Machines s.r.l.

Via dell'Industria, 3  
62010 Montefano MC - Italy

+39 0733 18 72 242  
info@hpmitaly.com

[www.hpmitaly.com](http://www.hpmitaly.com)